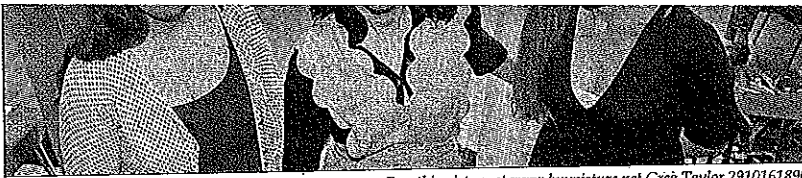


aid Mary Popham of Transition Totnes, which organises the fair, increasing number of people are con- g how best to make their homes energy-efficient, how to generate own energy or, possibly, how to a low-carbon home.

z talks, such as that on the future of and battery storage given by ew Collette of Totnes Energy, packed out, while the straw bale ng demonstration outside the hall ted quite a crowd.'

o weeks before the fair, Transition Totnes held its eighth Open Eco- ses Weekend, during which 17



Buy this picture at [www.buypicture.net](http://www.buypicture.net) Greg Taylor 2910161890  
Organisers Nicola Lang, Mary Popham and Thea Platt

homes and projects in or near the town- were open, receiving more than 670 visits.

One home, new-build Earth Spring, was visited by 150-plus people and fea- tured the work of local suppliers and craftspeople who were also at the fair.

Mary pointed out that organisers try to ensure that there are a wide range of homes, and projects to visit over the weekend and lots of variety at the fair, so that everyone can get something out of both events.

He also pleaded guilty to assaulting shopkeeper James Turner and damaging a watch belonging to Mr Turner on June 7.

Williams, of Colla- park, Totnes, had also denied causing £50 damage to a police cell in Torquay on the same day.

He changed his pleas to guilty and was jailed for three weeks for the damage and theft and

# Plan's organisers are pleased with response

Continued from front page  
We hope they will give us the same enthusiasm for giving us feedback on our vision and objectives'

She explained: 'The plan's major pillars are community, environment and economy.'

'These will be supported by three cross-cutting themes - community ownership, health and well-being and transport and movement.

'The plan's objectives will support the town's major priorities, including protecting and enhancing the town's civic spaces and market, creating genuinely affordable housing for local people, improving the industrial estate, localising aspects of the economy, creating a river park for the town, promoting green energy, improving cycle paths, footpaths, educational facilities and much more.'

She said that at the recent WI Action Week on Climate Change, the neighbourhood planning team was joined by Totnes MP Sarah Wollaston, who took a keen interest in the developing plan.

The neighbourhood plan team will be out and about around the town this autumn sharing what has emerged.

Mary said: 'The consultation timetable has been published on our website and Facebook page this week. We're having stalls at various community events.'

The neighbourhood plan is being led by a 13-strong steering



Contributed

Taking a keen interest in the Totnes Neighbourhood Plan: Totnes MP Sarah Wollaston, right, with plan coordinator Mary Coughlan-Clarke

group made up of town and district councillors, town business representatives, a district council planning officer, a planning professor from Plymouth and representatives from Transition Town Totnes, the Totnes Community Development Society, King Edward VI Community College and Totnes on the Move, chaired by Paul Bennett, the secretary of the Totnes and District Society.

**Don't Miss Out this Christmas**

**Christmas Party Nights only £24.95pp**

10th, 16th & 17th December 2016. Our ever more popular Christmas Party Nights including a course festive dinner and disco until late to celebrate with colleagues, friends and family.

**Christmas Day Sumptuous 4 Course Festive Dinner from £59.95pp**

25th December, Available 12 - 3pm.

**Grand New Year's Eve Masquerade Ball £74.95**

Bring your party to our party... at the No. 1 New Year's Eve Party venue in the South Devon. Celebrate the new year in style with an evening that includes: champagne cocktail on arrival, a sumptuous four course meal, live music and fireworks to welcome the New Year.

**CONTACT NOW TO BOOK**

Best Western  
**The Dartmouth**  
HOTEL • GOLF • SPA

Telephone: 01803 712686  
[www.thedartmouthhotel.co.uk](http://www.thedartmouthhotel.co.uk)  
[reservations@thedartmouthhotel.co.uk](mailto:reservations@thedartmouthhotel.co.uk)

**Westcountry Self Storage**

Dry, secure, internal and container self storage

From **£10.00** per week (plus VAT)

For details telephone **01803 813943**

Totnes Road, Ipplepen Newton Abbot TQ12 5TN

On A381 Totnes to Newton Abbot main road

[www.westcountryselfstorage.co.uk](http://www.westcountryselfstorage.co.uk)

**Aune Valley Meat & V**

**Place Your Christmas Order**

•Rake Farm, Loddiswell  
•6 Church Street, Modbury  
Loddiswell Shop: 01548 550413  
Cafe: 01548 559126  
Modbury Shop: 01548 830240

[www.aunevalley.meat.co.uk](http://www.aunevalley.meat.co.uk)

01803 7  
QU  
AF  
NEV  
selec  
• We  
• We  
• We  
&  
• Ko  
Unit  
Lodc  
www  
light  
08