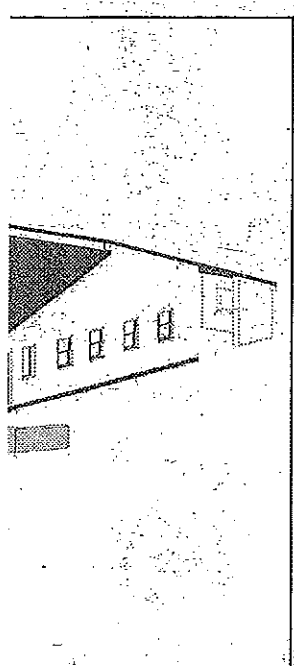


these as essen-  
 also been har-  
 es – and turning  
 money for chari-  
 Day celebration,  
 oyles from the

school orchard and, using a press, they produced 130 litres of apple juice. They also made apples cakes which were sold at a cafe to raise money for the Cancer and Leukaemia in Children, a charity chosen by the pupils in a vote in their school meeting.

Amanda added: 'The children had time to talk about a variety of children's charities and to understand the needs of children in different places. 'The apple cafe has been a wonderful way for them to raise money and to feel that they really can make a difference.'



NPS South West

# Town's 'planning passion is praised'

TOTNES has been praised for its 'passion' over the town's neighbourhood plan vision for the future.

For the past year the town has been involved in a major consultation exercise to put together a community-led local plan that will help to produce a development blueprint for Totnes for the next 15 years.

The plan team will be back in action during the next month with details of the proposals put together following the analysis of more than 1,000 comments produced by the consultation meetings and questionnaires.

The neighbourhood plan's new co-ordinator Mary Coughlan-Clarke said: 'We'd like to say thank you for the passion and enthusiasm of the local residents and organisations that took the time and interest to give us their views about how Totnes should develop during the next 15 years.'

'We hope they will show the same enthusiasm for giving us feedback on our vision and objectives'

She explained: 'The plan's major pillars are community, environment and economy.'



Contributed

MP Sarah Wollaston, right, with plan co-ordinator Mary Coughlan-Clarke

'These will be supported by three cross-cutting themes – community ownership, health and well-being and transport and movement.'

'The plan's objectives will support the town's major priorities, including protecting and enhancing the town's civic spaces and market, creating genuinely affordable housing for local people, improving the industrial estate, relocating aspects of the economy, creating a river park for the town, promoting green energy, improving cycle paths, footpaths, educa-

tional facilities and much more.'

She said that at the recent WI Action Week on Climate Change, the neighbourhood planning team was joined by Totnes MP Sarah Wollaston, who took a keen interest in the developing plan.

The neighbourhood plan team will be out and about around the town this autumn sharing what has emerged.

Mary said: 'The consultation timetable has been published on our website and Facebook page this week. We're having stalls at various community events.'

# for ren

spot and more well-  
 well as a reducing

ounty council 'state-  
 need' also points out:  
 oject at Totnes, St  
 'primary School will  
 two equally sized  
 in both "halves" of  
 own, providing a sus-  
 choice for parents  
 the town and the  
 te surrounding area.  
 planned that this will  
 avel to school" dis-  
 low as possible and  
 an updated school  
 an identify the need  
 se any on-site provi-  
 supports sustainable  
 or example cycle or